

An aerial photograph of a large estate, likely a country house or park. The scene is dominated by lush green trees and a winding river that flows through the landscape. In the center, there are several large, historic-style buildings with dark roofs and light-colored walls. To the left, there's a smaller building with a white roof and a parking area. The overall atmosphere is serene and natural, with the river reflecting the surrounding greenery.

# RANDLE SIDDELEY

LANDSCAPE ARCHITECTURE, CONSTRUCTION & MAINTENANCE





RANDLE SIDDE  
LANDSCAPE ARCHITECTURE & CONSTRUCTION



# An Introduction

Established over 50 years ago, we operate a turn-key landscape architecture, construction and maintenance practice which specialises in high-end residential and commercial schemes. Our design focus sees us working all over the world, while our construction and maintenance divisions are concentrated in prime central London and the Home Counties. With experience in designing and constructing some of the most prestigious commercial, mixed-use, residential and leisure projects in the world, we are uniquely positioned to develop innovative, sustainable projects which meet and surpass our clients' most exacting expectations.

From the design of intimate and secluded gardens and outdoor spaces to the master planning and conceptualisation of new developments, cities and islands, we constantly explore new ways of designing engaging spaces which embrace their ecological, social and cultural backdrops.

Our award-winning experience has enabled us to work with the world's leading developers, architects and private clients on iconic classical and contemporary gardens of great cultural significance. We take pride in conceiving sensitive yet striking schemes which will both inspire and delight today and provide an enduring legacy for future generations.

We are registered with the Landscape Institute in London and all of our design and conceptual work is true to the vision of our founder, Randle Siddeley, The Lord Kenilworth, who has been designing outdoor spaces for discerning clients for over 40 years.







## The Team

Randle Siddeley Limited (RSL) brings together a multidisciplinary team of dedicated professionals, including Landscape Architects, Urban Designers, Horticulturalists, Garden Designers, and skilled site teams. Supported by an in-house quantity surveying team and office staff, this talented workforce collaborates to bring our clients' visions to life.

With 50 years of experience and a passion for innovation, our team excels at combining creative flair with precise attention to detail. Working closely under the guidance of our founder, Randle Siddeley, our specialists ensure that every project—whether a small residential garden or an expansive commercial landscape—is delivered to the highest standards of craftsmanship.

Our construction team uses traditional techniques alongside cutting-edge methods to create beautifully crafted outdoor spaces. While many of our projects are based on in-house designs, we regularly collaborate with renowned external landscape designers to deliver exceptional results. Complementing this, our dedicated maintenance team ensures that every garden and landscape we create continues to thrive and look immaculate over time.



# Our Design Process

At RSL, our design journey begins with a collaborative consultation to establish your project brief and craft a concept design for your garden. This process is both engaging and enjoyable as we shape the vision for your outdoor space.

Typically, we will provide you with two masterplan options and hand-drawn perspective sketches, supported by inspiring precedent imagery.

Once a design is chosen, we develop it further with visuals and a detailed materials palette, showcasing every element. From there, we produce comprehensive plans and specifications for either our in-house construction team or external contractors, ensuring a seamless transition from concept to reality.

Opposite is a CGI-Style render produced inhouse (Design Development)







## Our Construction Division

RSL's Construction Division brings your vision to life with expert craftsmanship and cutting-edge techniques. Whether building gardens conceived by our Design Division or collaborating with renowned designers, we specialise in bespoke, high-end projects.

From intricate stonework and water features to green walls, terraces, and outdoor kitchens, our team delivers stunning landscapes for private homes, roof terraces, and commercial spaces. Offering both traditional tendering and turn-key design-and-build services, we ensure a streamlined process with a single point of warranty, delivering exceptional quality, speed, and value.

Opposite is Holland Villas Road in-construction



## Aftercare and Maintenance Service

Once your garden is complete, RSL's Maintenance Team ensures it remains vibrant and immaculate. Our bespoke services, from annual contracts to one-off visits, include expert care for planting beds, trees, hedges, lawns, irrigation, and outdoor features.

We provide seasonal planting, rejuvenate tired spaces, and employ advanced soil management techniques to promote lush growth. Serving London and Surrey's most prestigious areas, we treat gardens as dynamic extensions of the home, offering professional, meticulous care to keep them flourishing year-round.

Opposite is Kent House on an Annual contract





A misty forest scene with a large tree and a swing. The scene is set in a misty forest. A large, dark tree trunk is prominent on the right side of the frame. A swing hangs from a branch of the tree. In the foreground, there is a large, dark, rounded bush. The background is filled with mist and the silhouettes of other trees. The lighting is soft and diffused, creating a serene atmosphere.

## Recently Completed Projects

We've included a small selection of our projects here, with many more showcased on our website, where you can explore their stories and see how we bring extraordinary landscapes to life.



## Frognal Way

This 2,000 sq m contemporary retreat in Hampstead's Conservation Area showcases design technology and sustainability. Spanning three floors, most of the living space is underground.

The green roof integrates seamlessly with the garden, creating a visual connection between the upper gardens and the house. The upper garden resembles a lush, exotic woodland, featuring a recreational pavilion and children's play area.

Floating steps with spacious landings lead to the upper garden, while the sunny southern garden, accessible from the lower ground floor, includes a fire pit and banquette seating for entertaining

Project Type: Contemporary | Private Homes  
Services: Design | Construction | Maintenance  
Location: Hampstead

Architect: KSR  
Structural: Price & Myers

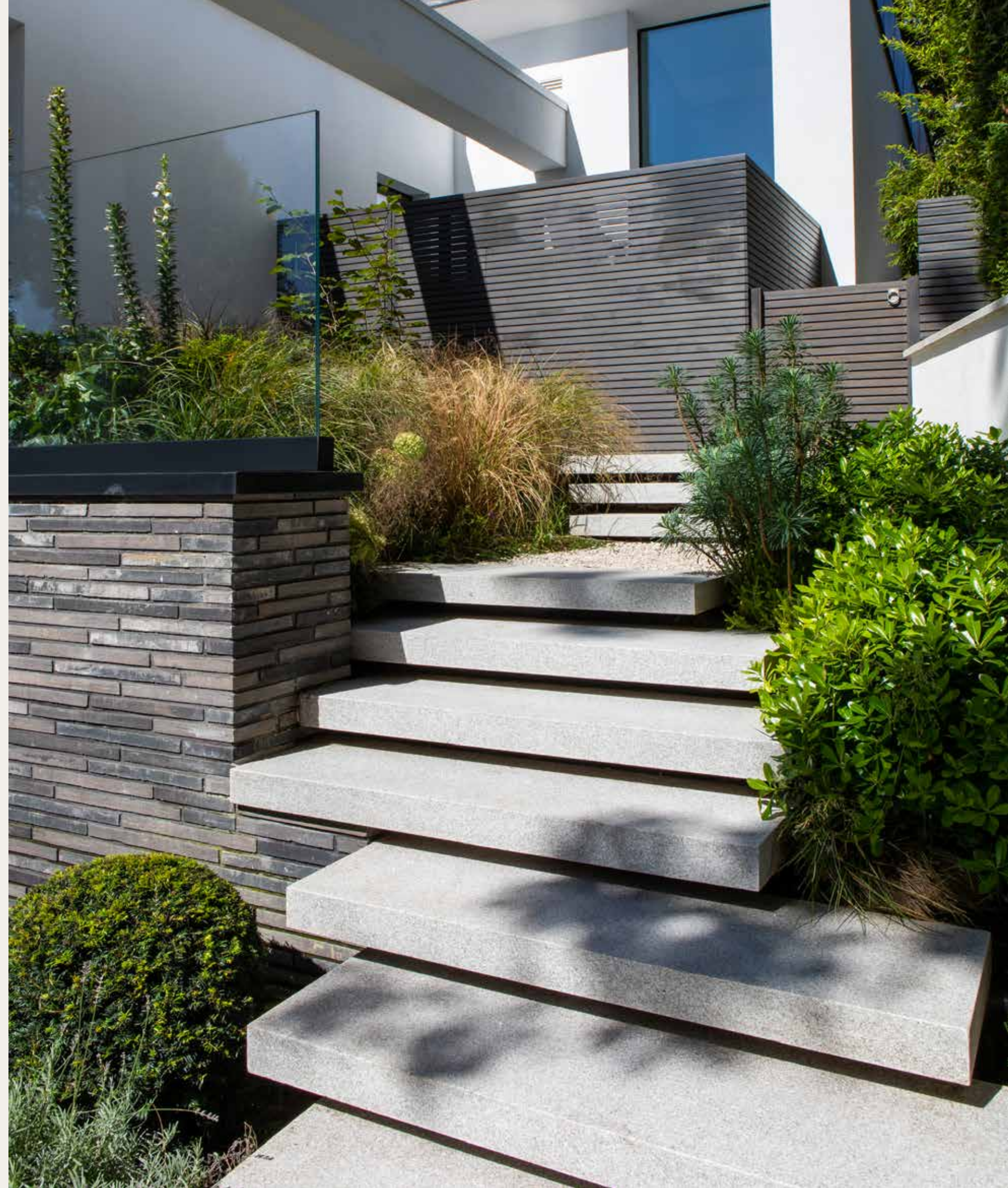
[Click here to view this project on our website.](#)

















## Riverdance

Riverdance, a 27-acre site along the Thames, was once a trading post. The property features a sweeping lawn, pond, natural stream, woodlands, grasslands, and formal gardens.

After 40 years, the client sought to rejuvenate the grounds for her family. RSL's vision retained the formal gardens while introducing wilder plants and grasses, reducing hedgerows to open views and connect the house to the landscape.

The stream was redesigned as a cascading waterway with aquatic planting, and stone and timber bridges were added. Curved planting beds now wrap around the river frontage, enhancing privacy and sustainability, with new disease-resistant elms and wildlife habitats.

Project Type: Country Estate | Private Homes  
Services: Design | Construction | Maintenance  
Location: Henley-on-Thames

[Click here to view this project on our website.](#)

















## Chester Square

This garden, framed by London plane trees and elegant buildings, inspired a design that preserves its natural charm while introducing a fresh touch. At its centre, a lawn bordered by stone serves as an inviting oasis. The relocated water feature aligns with the bow window, creating a focal point.

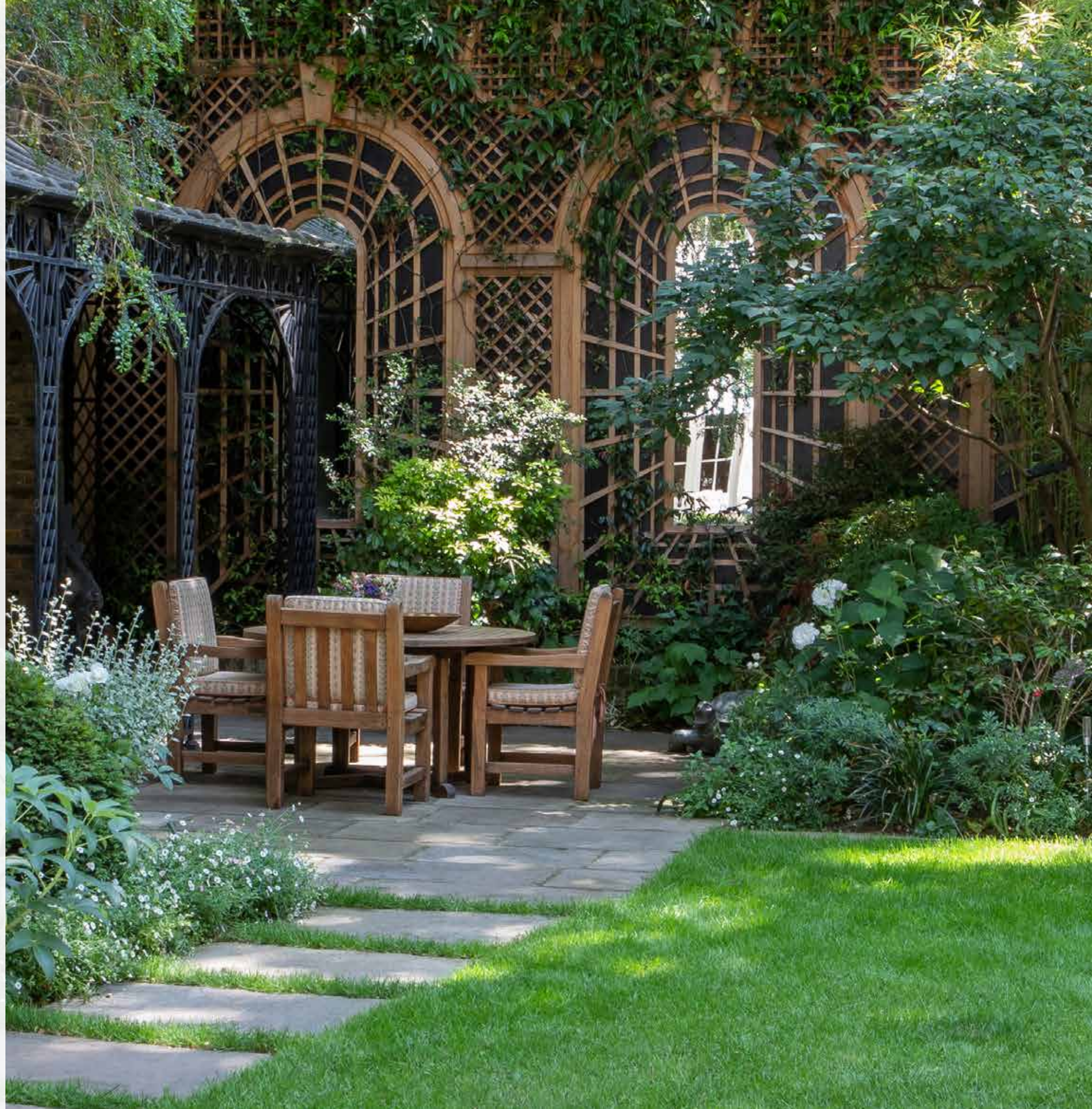
Expanded planting beds feature multistem Osmanthus trees, transitioning to woodland under planting along a stepping stone path. At the garden's rear, a crafted trellis adds intimacy, complemented by recessed mirrors that reflect the lush greenery. This transformation enhances the garden's existing beauty, blending design and nature to evoke tranquillity and timeless elegance.

Project Type: Classic | Private Homes

Services: Design | Construction | Maintenance

Location: Belgravia, Central London

[Click here to view this project on our website.](#)











## Holland Park

In London's Holland Park, RSL transformed a segmented garden into a private oasis tailored to the client's desires. The original layout, divided by pleached trees, was reimagined as two cohesive outdoor rooms. Focal points were added for continuity, and skylights were reduced to enhance garden views.

Each outdoor room was given a distinct identity: the dining area features a steel pergola with heated paving, ideal for year-round use, while the sunken lounge offers privacy with custom settees, a fire table, and an electric parasol. The design balances privacy, aesthetics, and functionality, creating a dynamic and inviting space.

Project Type: Contemporary | Private Homes  
Services: Design | Construction  
Location: Holland Park

Timescale: 26 weeks  
Project Value: £500k

[Click here to view this project on our website.](#)







## Hanover Terrace

RSL transformed a small, unremarkable garden in a leafy London enclave into a magical retreat. The original space had awkward levels and poor views from the house's large window. RSL addressed this by creating floating steps from patinaed Italian limestone, surrounded by tiered flower borders, and planting a magnolia atop the wine cellar's roof.

A central stone fireplace and custom Western red cedar trellis enhanced a plain brick wall, while other walls were adorned with fragrant jasmine. The result is a beautifully scented garden with distinct areas for dining and relaxation, seamlessly blending different levels into a harmonious design.

Project Type: Contemporary | Private Homes  
Services: Design | Construction | Maintenance  
Location: Regents Park

[Click here to view this project on our website.](#)











## Old Vicarage

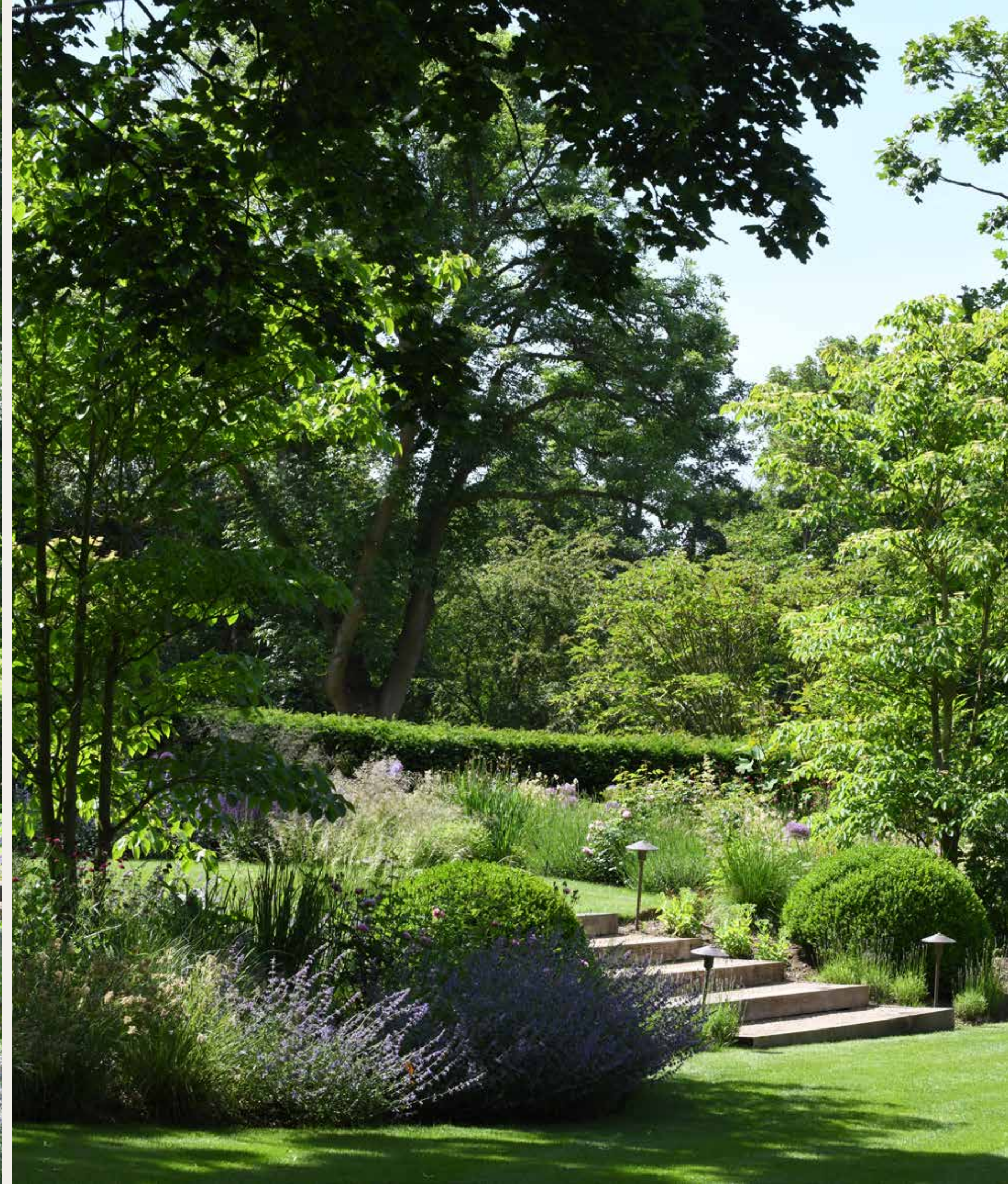
The landscape proposal for The Old Vicarage in Petersham transforms the grounds into a cohesive blend of formal and natural elements.

Key features include multiple lawns, a woodland garden with casual pathways, and an upper produce garden with fruit trees. Espalier trees provide privacy by screening the tennis court, while a pavilion with a fireplace offers scenic views.

The project introduces a realigned drive with meadow grass and spring bulbs, enhancing the approach. Sustainability is integrated with native plants and functional spaces, including a glasshouse and a play area. This redesign balances elegance, functionality, and harmony with the surrounding landscape.

Project Type: Country | Private Homes  
Services: Design | Construction  
Location: Petersham, Richmond  
Architect: Smallwoods







## Gilston Road

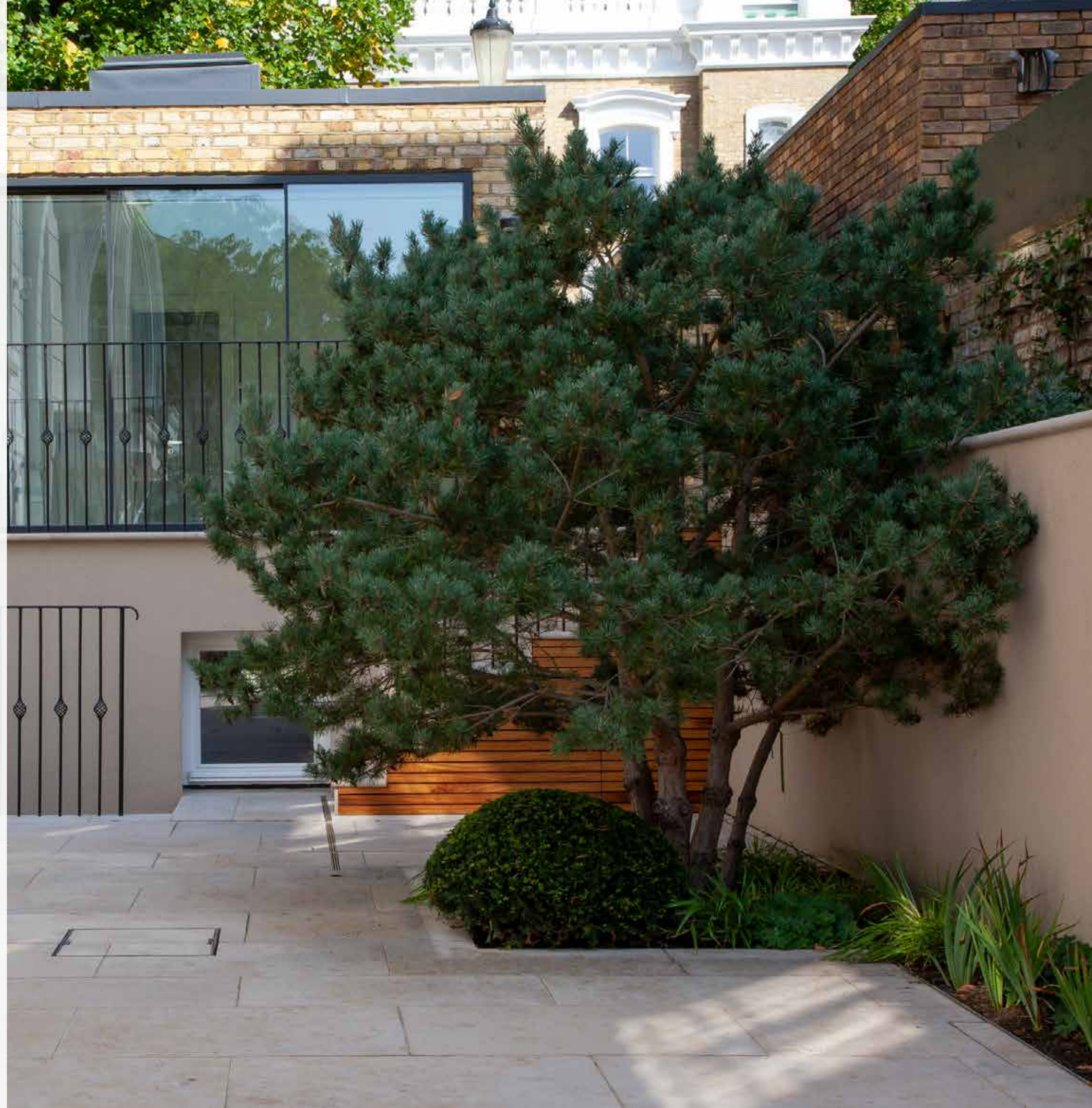
We were commissioned to rejuvenate an existing garden, working with the established hardscape elements already in place. The client, having been disappointed by previous contractors, trusted us to bring the garden to life through soft landscaping.

We carefully curated a planting palette tailored to complement the existing structure and enhance the overall ambiance. To help the client visualise the final design, we prepared detailed CGI renderings that illustrated the scheme's potential.

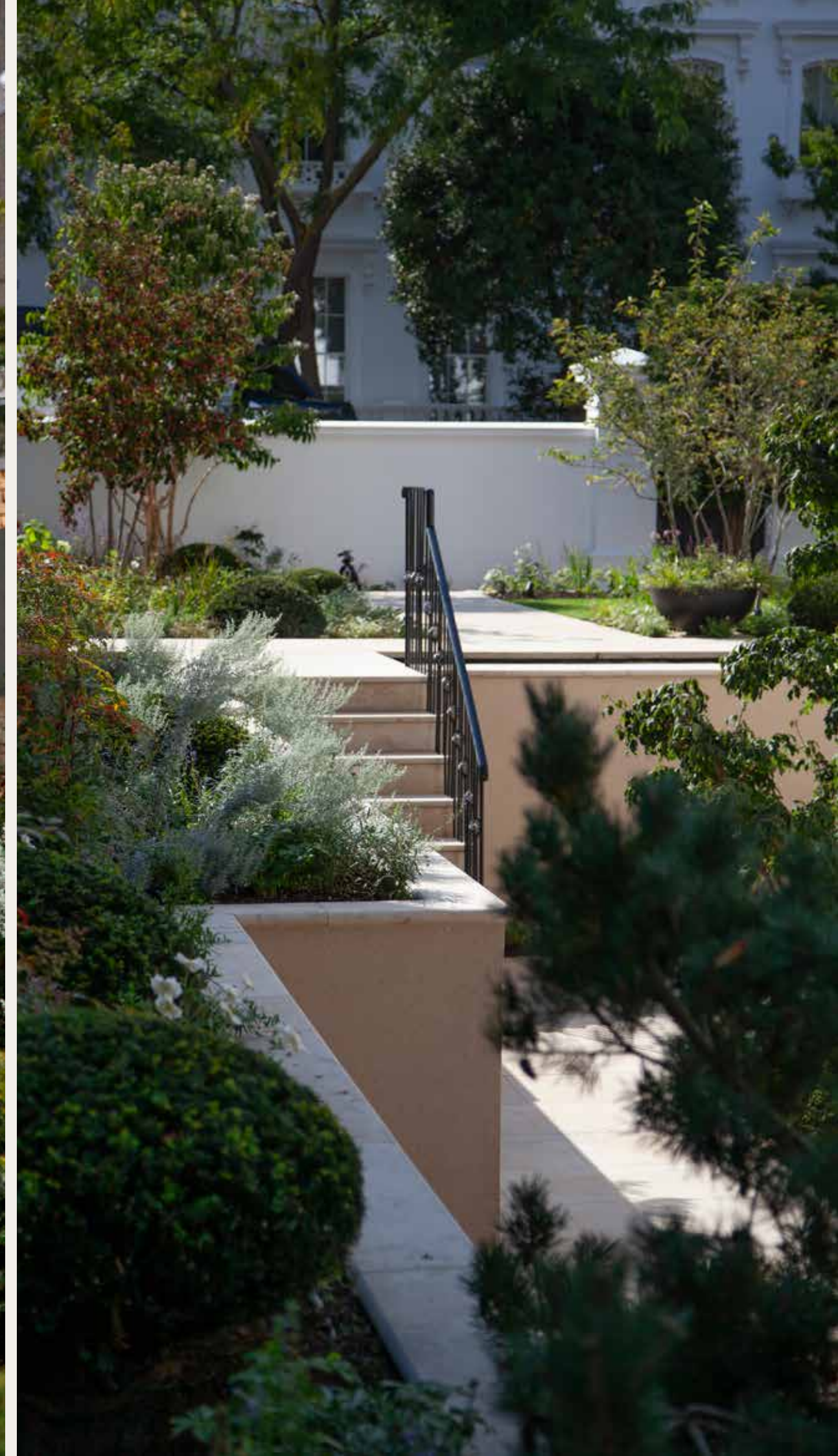
The result was a vibrant, harmonious garden that aligned with the client's vision, transforming the space into a welcoming, beautifully balanced outdoor retreat.

Project Type: Contemporary | Private Homes  
Services: Design | Construction | Maintenance  
Location: Kensington & Chelsea  
Timescale: 8 weeks (Soft Landscape Only)  
Project Value: £140k

[Click here to view this project on our website.](#)









## West Park

RSL was commissioned to redesign a six-acre Surrey Garden overlooking Wentworth Golf Course.

The drive was replanted, and a water feature was enhanced with a natural cascade. In the rear garden, a gleaming stainless steel “Teardrop” by David Harber hovers over water, creating a dramatic focal point. Semi-circular steps lead to twin parterres, while across the lawn is a family entertainment area with a Gaze Burvill kitchen and TV.

The woodland gained meandering paths, a Palladian temple, and a fantasy tree house. The back terrace now features York stone with black granite in an elegant, flowing oriental design.

Project Type: Country | Private Homes  
Services: Design | Construction  
Location: Wentworth Estate, Surrey  
Architect: MMM Architects  
Timescale: 2yr  
Project Value: £2.3 million

[Click here to view this project on our website.](#)

















## Private Estate, St. Tropez

The transformation of this neglected property maximised its stunning views of the St. Tropez bay while celebrating its native parasol pines, olive trees, and cypress avenue.

A new driveway and replanted cypress trees framed the lawn and pool, while sloping gardens became elegant terraces with stone retaining walls.

Lavender, tulbaghia, and agapanthus added waves of colour to olive terraces, while vibrant perennials enhanced the dry garden. A pergola draped in blooms added charm, and the old kitchen garden became a dual-purpose tennis and basketball court. A striking modernist stone wall near the pool unified this serene coastal sanctuary.

Project Type: International | Private Home  
Services: Design  
Location: St. Tropez, France

[Click here to view this project on our website.](#)

















## Private Chalet, Mont Blanc

The redesign of this private chalet ensured privacy while preserving breathtaking views of Mont Blanc. The main garden, once exposed to the street, became a serene retreat.

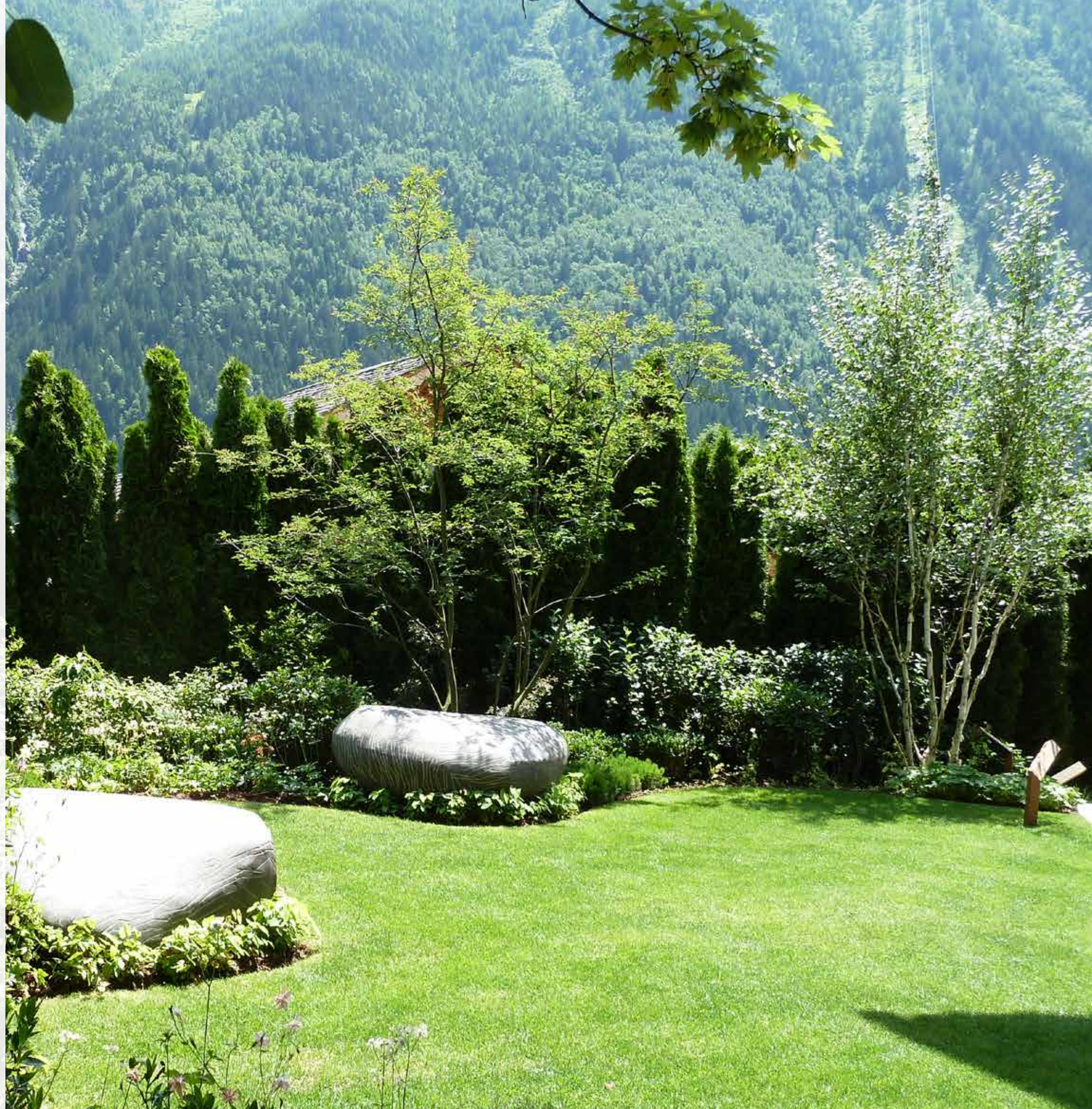
Evergreen conifers and handcrafted boulders by Bottagiso Decoux softened unattractive walls and enhanced the alpine character. Sculptural planting directed focus toward Mont Blanc, while Corten steel containers with *Pinus mugo* created natural divisions.

Semi-mature trees shielded neighbouring views, and the planting scheme was tailored to withstand harsh alpine winters.

The result is a tranquil garden where Mont Blanc seems to rise dramatically from the property's edge.

Project Type: International | Private Home  
Services: Design | Construction | Maintenance  
Location: Alpine Region, Mont Blanc

[Click here to view this project on our website.](#)

















## Villa La Tour, Geneva

The redesign of Villa La Tour blends contemporary elegance with Swiss alpine charm, enhancing functionality, aesthetics, and sustainability while honouring the region's character.

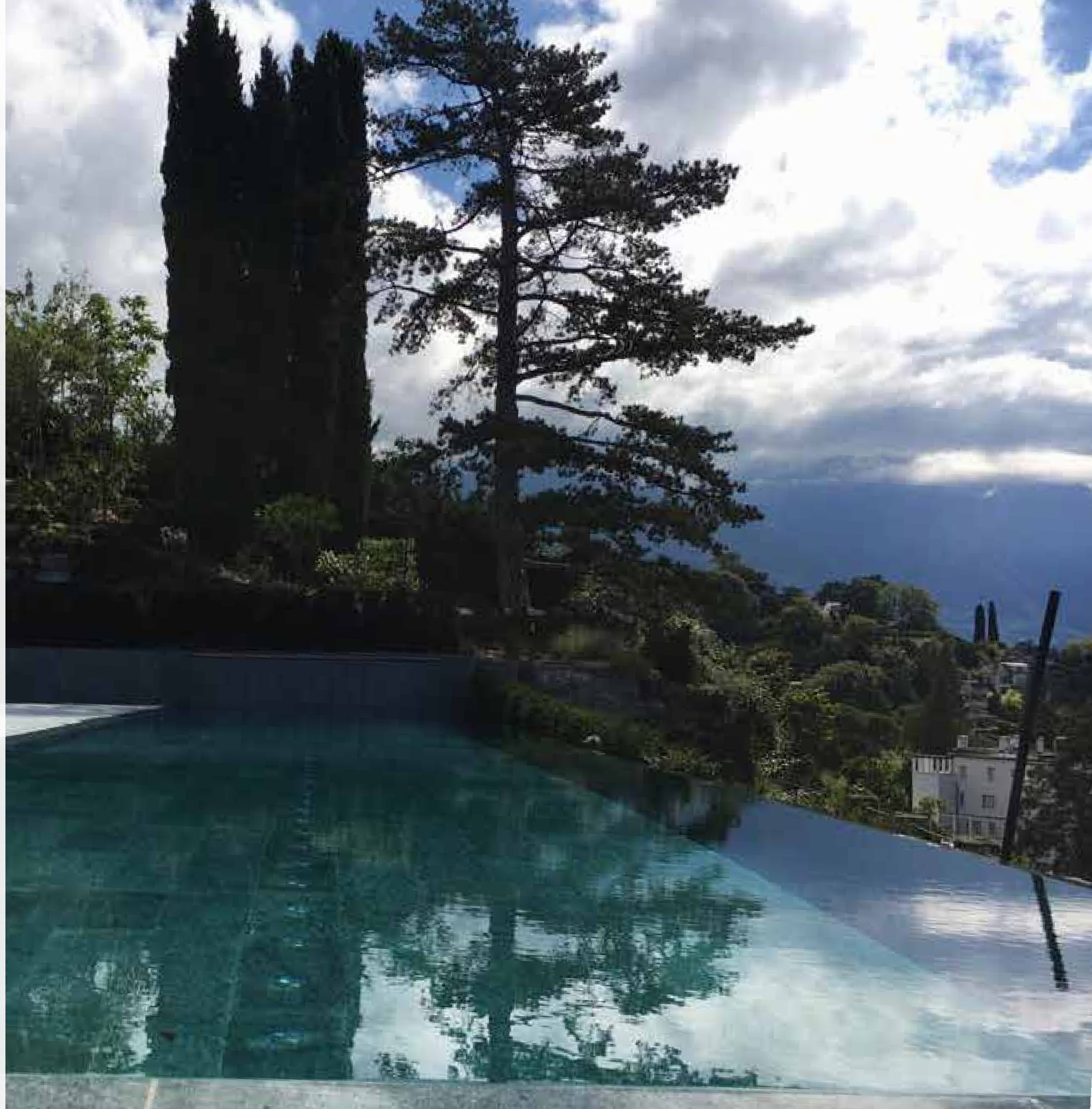
**Northern Gardens:** A formal frontage with specimen trees, espalier panels, and a modern reflecting pool ensures privacy and style.

**Eastern Gardens:** Tiered corten-edged planters and a cantilevered observation deck nestled among Cypress and Pine trees provide visual interest and breathtaking lake and mountain views.

**Western Gardens:** Open lawns framed by flowering trees and hedges lead to Lake Geneva, with alpine-inspired planting and sculptural rock features.

**Pool Terraces:** Gabion stone walls support terraces with a summerhouse and cantilevered pergola, completing this refined alpine retreat.

Project Type: International | Private Home  
Services: Design  
Location: Swiss Alps, near Lake Geneva

















## Surrey Manor

The redesign of Surrey Manor's estate seamlessly combined functionality with charm, enhancing its natural beauty.

A formal driveway entrance, framed by hedges and lawns, creates a grand sense of arrival. The southern gardens feature semi-circular lawns, vibrant parterre planting, cascading water canals, scented climbers, and an ornamental reflection pond.

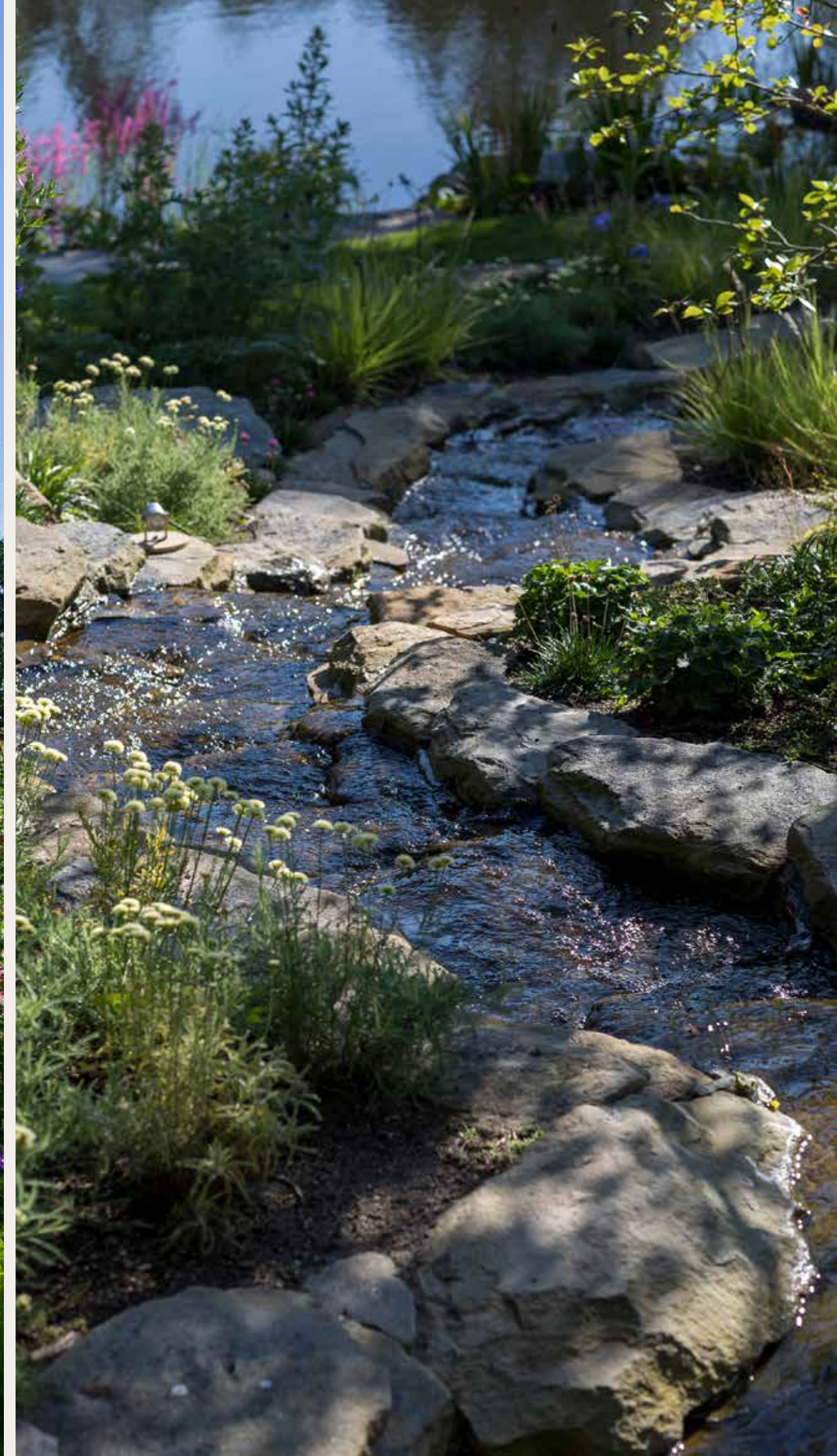
The western terrace offers alfresco seating with views of the rolling landscape, while steps, mown lawns, and pathways connect it to other areas. A swimming pool garden with a paved terrace, fire pit, and surrounding meadow blends into the woodland.

Key features include a reimagined tennis court, productive kitchen garden, orchard, and an improved pond area for year-round enjoyment..

Project Type: Country Estate | Private Home  
Services: Design | Construction | Maintenance  
Location: Farnham, England

















## Athlone House

Built in the 1870s, this architecturally eclectic house had passed through successive owners, falling into a state of disrepair until salvaged by its current owner. The project involved the full restoration and extension of the house and its historic grounds including gardens originally designed by Gertrude Jekyll and James Pulham.

A sweeping driveway was created framed by an avenue of liquidamber trees and generous beds of ornamental planting. The wider landscape was restored including formal gardens, wildflower meadows, acid grasslands and a pond with water cascade and boathouse.

Project Type: Classical | Private Homes  
Services: Design | Construction | Maintenance  
Location: Hampstead

Architect: SHH

















## Resort & Mansions, Bodrum

The Resort & Mansions Bodrum project redefines luxury by blending natural beauty with cutting-edge sustainability. The landscape design embraces the peninsula's coastal charm, creating an immersive connection to Bodrum's rugged elegance.

A grand arrival experience, framed by discreet planting and natural contours, ensures uninterrupted Aegean Sea views. Native Mediterranean species, including olive trees, lavender, and rosemary, enhance the sense of place while minimizing water use.

Private terraces feature lush vegetation and natural windbreaks for privacy and comfort, with fragrant plants like citrus and jasmine adding seasonal sensory appeal.

Pathways lined with native grasses connect guest spaces to communal areas, while a dry garden aesthetic with sculptural trees and flowering shrubs provides vibrant focal points, harmonizing with the natural stone architecture.

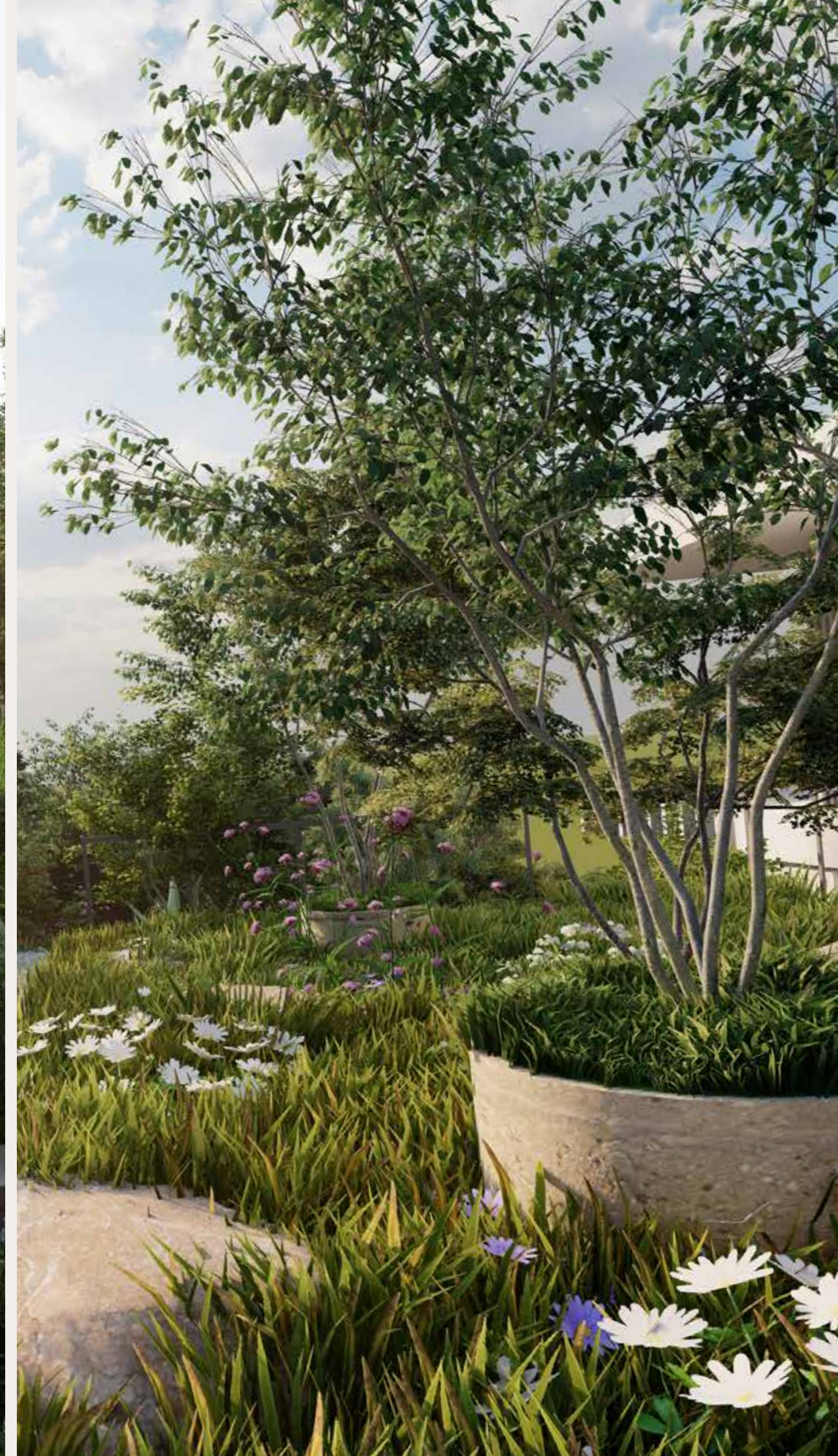
Project Type: International | Luxury Hospitality (Ongoing)

Services: Design

Location: Bodrum, Turkey











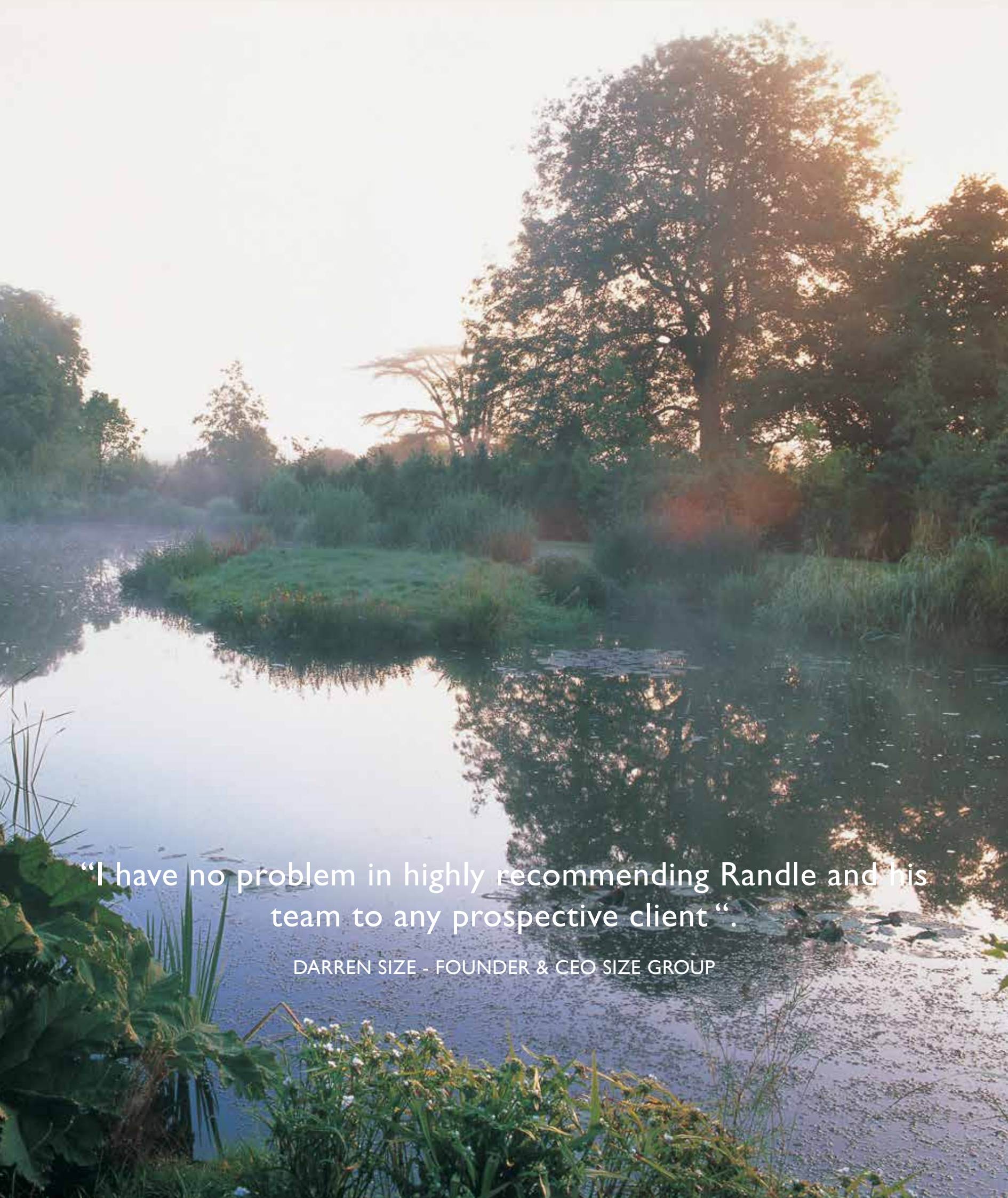






# Accreditations

Over the years, Randle Siddeley Limited has been proud to receive recognition from esteemed industry institutions and discerning clients. The acknowledgments that resonate most with us are those that reflect our core values of design excellence, craftsmanship, sustainability, and collaboration, which are at the heart of everything we do.



“I have no problem in highly recommending Randle and his team to any prospective client “.

DARREN SIZE - FOUNDER & CEO SIZE GROUP



# Project Partners

We are often invited back to assist with new phases of work, an opportunity we greatly value as we help shape the ongoing evolution of our clients’ gardens and landscapes. Similarly, we take pride in collaborating with the same architects and interior designers on multiple projects over many years, building strong and enduring partnerships.

## ARCHITECTS

- Adam Architecture
- Alex Kravetx Design
- Ascot Design
- Assael
- BLDA
- CAPS
- D3
- Donald Insall Assocaites
- Formation
- Gregory Phillips Architects
- KSR
- LAB Architects
- LA London
- Map Projects
- MSMR
- MMM Architects
- MWA
- Nick Faulkes
- Nick Farnell
- PDP
- Purcell
- Pringle Richards Sharratt
- Richard Reid Architects
- Stanhope Gate
- Studio Indigo
- Studio Razavi Architecture
- Smallwood Architects
- Squire & Parnters
- Thomas Croft Architects
- Yiangou Architects
- Wolff Architects

## INTERIOR DESIGNERS

- Accouter Design
- Banda
- Bill Bennette
- Bulgari
- David Linley & Co
- Deniot
- Finchatton
- HBA
- Katherine Pooley
- Laura Hammett
- LXA
- Martin Kemp Design
- Nicky Haslam
- Todhunter Earle
- I508

## CONTRACTORS

- Beau Bespoke
- Castellum
- Chelsea Construction
- Cheyne Construction
- CC Construction
- RW Armstrong
- Knightbuild
- Knowles
- LDB Construction
- Walter Lilly
- Westgreen

## PROJECT MANAGERS

- Aecom
- Albyns
- Arcacia
- Caroline Baker
- Corrigan Gore
- Fed3 Projects
- Gardiner & Theobald
- Grafton
- Harsbrook
- Kempton Smith
- KYN
- London Projects
- Paragon
- Redd
- Redbook Agency
- Regency Grove
- Voza Developments
- Webster Hart

## PROPERTY AGENTS & DEVELOPERS

- Colliers
- Higginsongrey
- REDD Real Estate
- Lichfields
- DDRE







## KEY CONTACTS

Gavin Heppelthwaite  
Design Director  
[Gavin.heppelthwaite@randlesiddeley.co.uk](mailto:Gavin.heppelthwaite@randlesiddeley.co.uk)

Ben Price  
Construction Manager  
[Benjamin.Price@randlesiddeley.co.uk](mailto:Benjamin.Price@randlesiddeley.co.uk)

Richard Pearce  
Maintenance Manager  
[Richard.Pearce@randlesiddeley.co.uk](mailto:Richard.Pearce@randlesiddeley.co.uk)

Suzie Goodhew  
Client Relationship & Business Development Manager  
[Suzie.Goodhew@randlesiddeley.co.uk](mailto:Suzie.Goodhew@randlesiddeley.co.uk)

**Creating Exceptional Landscapes: Designing, Building, Nurturing.**